

# Hiab XS 622

## Capacity 58 tm

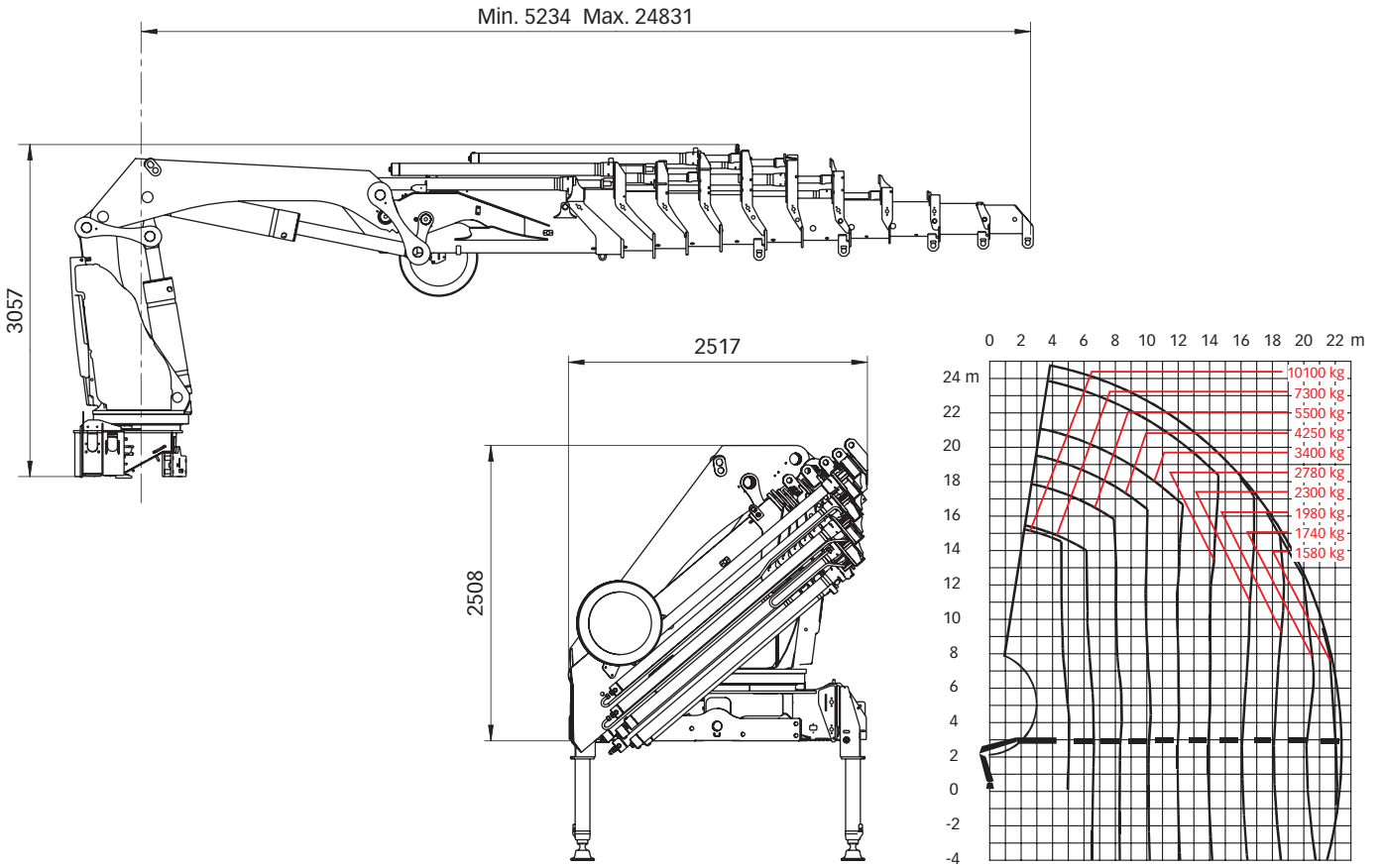


# Hiab XS 622 Basic data

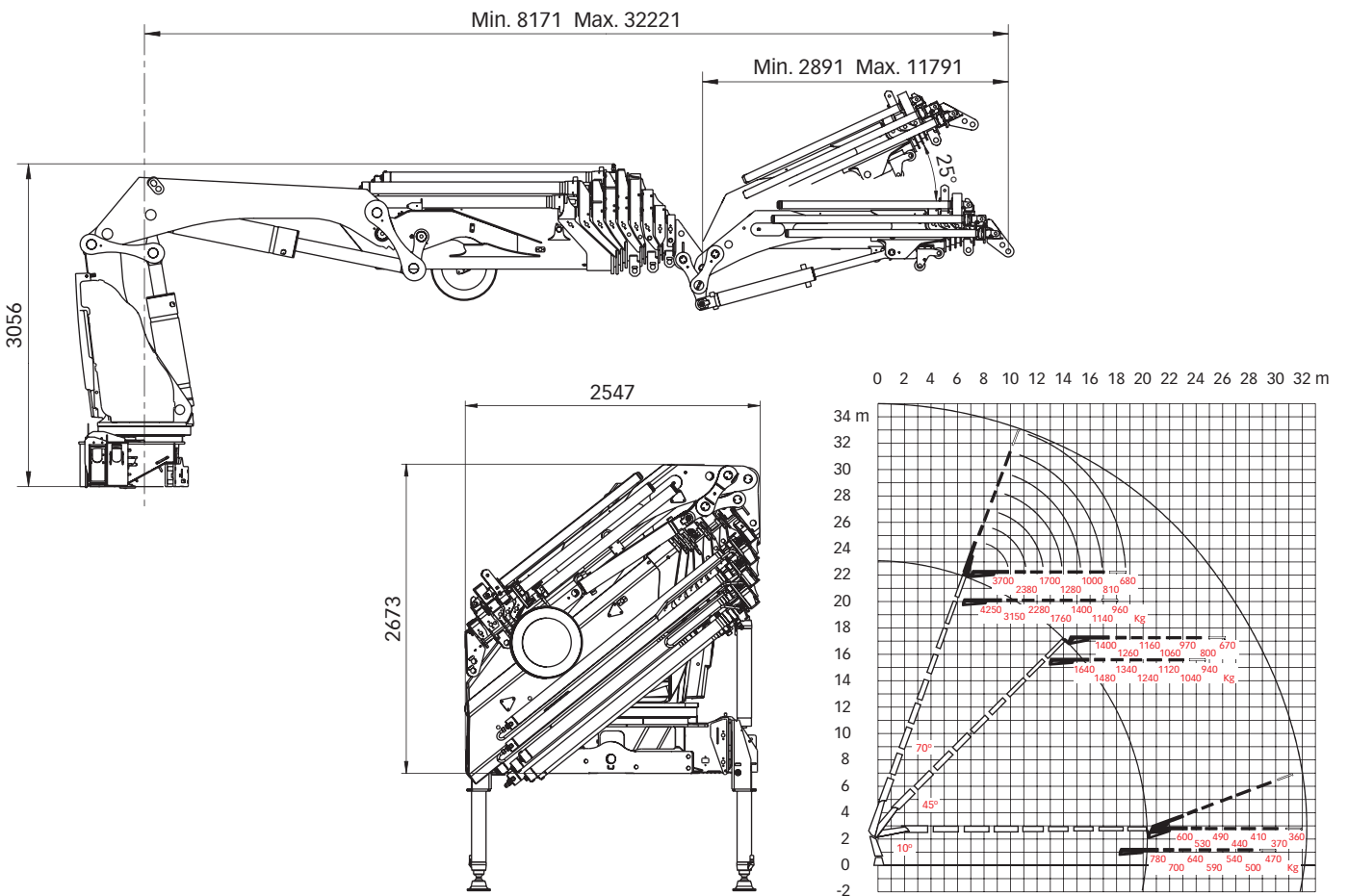
Technical data	EP-6 HiPro	E-6 HiPro	E-8 HiPro*	E-9 HiPro
Max. lifting capacity (kNm)	452	459	379	343
Outreach, hydraulic extensions (m)	16.9	15.8	20.4	22.7
Outreach, manual extensions (m)	-	-	-	25
Outreach, with jib (m)	-	28.1	32.5	-
Outreach / lifting capacity (m / kg)	5.1 / 10600	4.8 / 11300	5.0 / 10500	5.1 / 10100
	6.7 / 7800	6.4 / 8200	6.5 / 7700	6.7 / 7300
	8.6 / 5800	8.1 / 6200	8.3 / 5700	8.4 / 5500
	10.6 / 4600	9.9 / 4950	10.1 / 4450	10.2 / 4250
	12.7 / 3700	11.7 / 4100	11.9 / 3600	12.0 / 3450
	14.7 / 3150	13.7 / 3450	13.9 / 2960	14.0 / 2780
	16.9 / 2720	15.8 / 2960	15.9 / 2500	16.1 / 2320
	-	-	18.0 / 2160	18.1 / 1980
	-	-	20.0 / 1940	20.2 / 1740
	-	-	-	22.2 / 1580
Outreach / lifting capacity, manual extension (m / kg)	-	-	-	24.7 / 1000
Outreach / lifting capacity, with jib (m / kg)	-	19.1 / 1420	23.2 / 600	-
	-	20.4 / 1280	24.5 / 530	-
	-	21.7 / 1180	25.8 / 490	-
	-	23.1 / 1080	27.2 / 440	-
	-	24.6 / 1000	28.7 / 410	-
	-	26.3 / 930	30.4 / 370	-
	-	28.0 / 870	32.1 / 360	-
Slewing angle	∞	∞	∞	∞
Height in folded position, with / without jib (mm)	2580	2673 / 2500	2673 / 2508	2508
Width in folded position, with / without jib (mm)	2535	2549 / 2508	2547 / 2500	2517
Installation space needed, with / without jib (mm)	1595	1850 / 1598	1850 / 1670	1670
Weight, "standard" crane without stabilizers (kg)	5523	5600	6048	6247
Weight, jib (kg)	-	1363	1363	-
Weight, manual extension for jib (kg)	-	-	-	100
Weight, stabilizer equipment (kg)	962 - 1100	962 - 1100	962 - 1100	962 - 1100

\* Jib with Dual Capacity (JDC)

**Hiab XS 622 E-9 HiPro**



**Hiab XS 622 E-8 jib 150X-6**



**Disclaimer.** Hiab cranes have been built to meet the highest standards of safety and service life and have been thoroughly tested. Strength calculations for this model have been carried out in accordance with EN13001 in fatigue class S0. Cargotec's certified Quality Assurance System complies with ISO 9001. Some of the items in our literature may be extra equipment. Certain applications may require an official permit. We reserve the right to change technical specifications without prior notice. Hiab cranes produced for EU-countries are CE-marked and comply with the European Standard EN 12999.

**Cargotec** improves the efficiency of cargo flows on land and at sea – wherever cargo is on the move. Cargotec's daughter brands Hiab, Kalmar and MacGregor are recognised leaders in cargo and load handling solutions around the world. [www.cargotec.com](http://www.cargotec.com)

